

SPEC SHEET + MEASUREMENTS



Nike Club Fleece Jogger. NKHM8045

Product photo



Whether you're running laps or running errands, this Nike jogger combines warmth, style and performance.

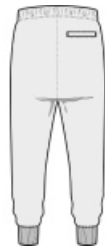
- 8.2-ounce, 80/20 cotton/polyester
- Interior dyed-to-match drawstrings at waist
- Two front pockets
- One back pocket with snap button
- Ribbed cuffs
- Embroidered Swoosh logo on left leg

Care Instructions Machine Wash Cold. Wash With Like Colors. Do Not Use Softeners. Remove Immediately. Do Not Allow To Lay On Itself When Wet. Do Not Use Bleach. Tumble Dry Low. Cool Iron. Do Not Dry Clean.

Sketches



front



back

SPEC SHEET + MEASUREMENTS



Nike Club Fleece Jogger. NKHM8045

PRODUCT MEASUREMENTS

	XS	S	M	L	XL	2XL	3XL	4XL
Waist	13 3/8	14 3/8	15 3/8	16 1/4	17 1/4	18 1/4	19 1/4	20 1/4
Inseam	28	28	28	28 3/8	28 1/2	28 3/8	28 1/8	28

Waist: Measured point to point across the waistband when laid flat.

Inseam: Measured from crotch seam to hem.

SIZE CHARTS

	XS	S	M	L	XL	2XL	3XL	4XL
Waist	25 1/2-29	29-32	32-35	35-38	38-43	43-47 1/2	47 1/2-52 1/2	52 1/2-57

HOW TO MEASURE



WAIST

Measure around the smallest part of the natural waist.

SPEC SHEET + MEASUREMENTS



Nike Club Fleece Jogger. NKHM8045

COLORS



Anthracite
PMS 432C



Black
PMS BLACK
C



Dark Grey
Heather
PMS 422C



Midnight Navy
PMS 533C



White